

Designed for:

Northrop Grumman G2000

The GCU-2K1 is a complete digital signal processor (DSP) controller designed specifically for the Northrop Grumman G2000 dynamically tuned gyroscopes. The GCU-2K1 provides the necessary power and signal conditioning to actively control these gyros. The unique and powerful features of the GCU-2K1 provides all the tools necessary to tune the gyroscope to its specific application.

Tuning parameters stored locally in the GCU FLASH memory.



GCU-2K1, Complete DSP based Gyro controller

FEATURES

- +/-10V Rate Analog Out and Digital Out (SPIF)
- Digital Tuning (No Select-In-Test components)

GCU-2K1 Specifications:

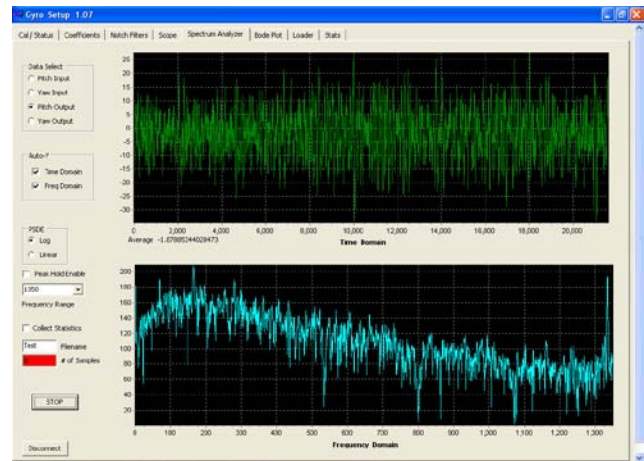
Module Dimensions	1.7"W x 2.4"W
GCU Power Supply Voltage	28.0 Vdc -10V +4Vdc
GCU PS Current (Quiescent)	155.0ma
Operating Temperature	-40° C to +85° C

GyroSetup is a full featured Windows™ application included free that works in concert with the GCU-2K1 module, allowing precise tuning of the gyroscope through a standard USB interface.

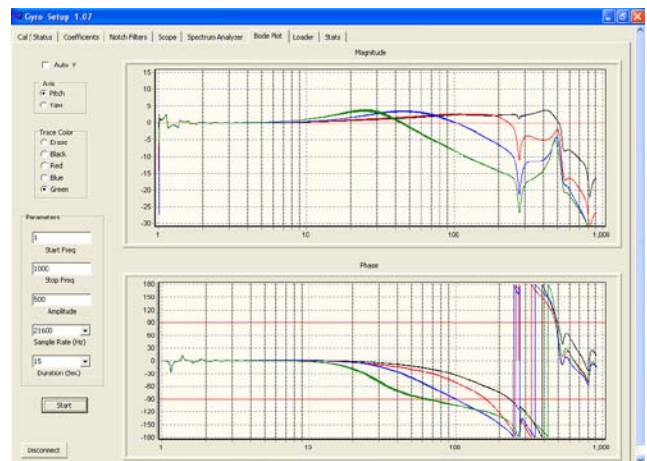
Complete information and additional screen shoots available at, www.maxmetrix.com

GCU-2K1 Gyro Setup Application

- Utilizes a Standard USB Interface
- Gyro Tuning Performance Parameters
- Tunable Notch and Low Pass Filters
- Real-Time Oscilloscope Display
- Real-Time Spectrum Analyzer Display
- Complete Bode Plot Analyzer Display



Spectrum Analyzer



Bode Analyzer